

.JABO

grounded in nature

.JABO

.JA

## GROUND ED IN NATURE

*In today's fast moving society, more and more people feel the urge to escape the hustle and bustle of everyday life.*

Many of them take to nature with family and friends, or on their own. Nature brings us peace and quiet, harmony and inner calm. It helps us to return to our natural state, in which we are able to reflect on the way we live our lives. From this self-searching arises the question whether we wish to continue on the highway to nowhere or to follow our own path to a meaningful and fulfilling life.

Upon returning home, our hearts glow with the promise of good things to come. Our homecoming introduces a new state of mind, in which we pay attention to our needs and regularly take the time to relax and recuperate. In this space that we have created for ourselves, we become inspired to carry out new ideas with genuine enthusiasm.

As these ideas start to take shape, we feel the need for a more natural home environment. Jabo creates flooring products that evoke the atmosphere of nature.



.JA

## CONTENT

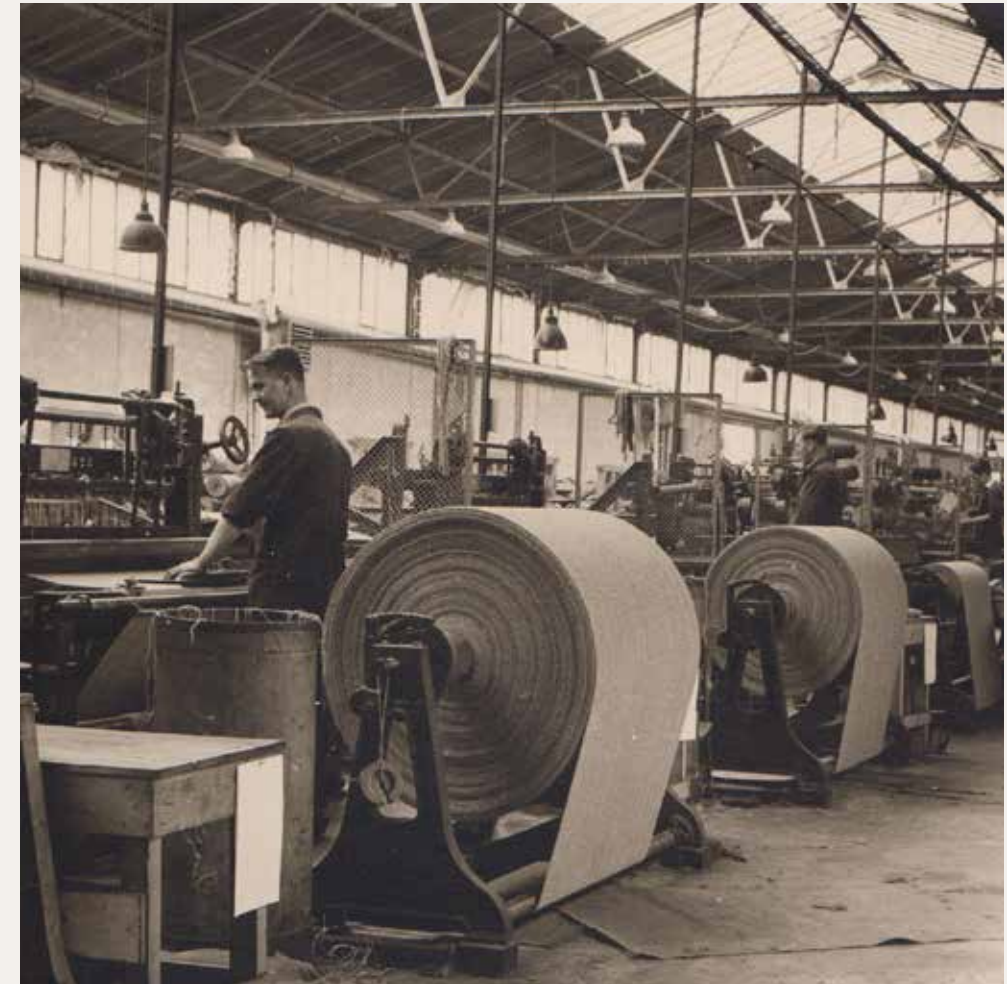
THE STORY OF JABO	_____	10
PRODUCTION METHODS	_____	16
SUSTAINABILITY	_____	18
JABO STUDIO	_____	24
STAIR COVERING	_____	32
THE COLLECTION	_____	39

## SINCE 1953

*Jabo's now situated in Genemuiden, the centre of the carpet industry in the Netherlands.*

As early as the 16th century, craftsmen used the rushes that abound along the banks of the many rivers and lakes in the area to make rush floor matting by hand. By the early 20th century, carpets were woven on looms, and by 1926, on weaving machines. Nowadays, tufting as well as weaving techniques are used, depending on the type of carpet that is required.

No wonder that Jabo particularly appeals to people who feel the need to seclude themselves from time to time, so as to regain their strength and to practice self-reflection. Very often, they are sensitive and conscious people who pay attention to their personal needs and are willing to make necessary changes to their lives. They appreciate the sensory experience that they seek outdoors. To them, it is about what they feel, for instance, when playing and running about in the grass, having picnics in the countryside, or walking barefoot in the sand.



The name Jabo is a combination of the first two letters of founder Jan Bosman's given name and surname. In 1953, Bosman made a name for himself when he introduced his groundbreaking invention: the woven wall-to-wall carpet. Jabo is now a family business, operating successfully in the global marketplace. It continues to innovate and further develop, while honouring its heritage and retaining its time-proven craftsmanship.

**Source: Verto**







## CREATING TIMELESS DESIGN

*Jabo creates flooring products that evoke the atmosphere of nature.*

It does so from a passion for creative interior design and the desire to help people to create happy homes. Combining creativity, dedication, craftsmanship and innovative spirit, it continually aims to exceed the expectations of its customers while respecting nature.

Like its predecessors, Jabo works closely with nature. It uses only natural materials, such as sisal, seagrass and wool for the manufacture of carpets and rugs, and even upcycles whenever possible. Its manufacturing process has little impact on the environment and our natural resources, and it actively contributes to a circular and sustainable economy that is certain to serve future generations.





## PRODUCTION METHODS

The concept of carpeting traces its roots back to the age-old practice of crafting mats from rushes. These mats, measuring around 50x50 cm or even larger, were meticulously stitched together, forming what we now know as floor coverings.

Almost instinctively, Jan Bosman opted for the time-honored method of weaving, a process renowned for its unwavering stability and sheer resilience. Over the years, various techniques have been developed for carpet production, but weaving has remained the rock-solid foundation upon which it all began.

### WEAVING

*Woven carpet combines two defining features: lasting resilience and design.*

In a simple process, heddles move up and down, the warp advances steadily, and a shuttle swiftly carries the weft from left to right, creating a fabric of remarkable stability and strength. Only the addition of a backing remains before the carpet is ready for upholstery.

The second hallmark is the wealth of textures and patterns achieved by fine-tuning variables such as heddle settings and spacing. A true testament to Jabo's artistry.



### TUFTING

*A needle and thread penetrate a ground cloth.*

In the case of cut-pile, the thread is continuously cut. For loop-pile, on the other hand, it remains intact. All of this happens hundreds of times simultaneously across the full width.

In our product development, we begin with the desired aesthetics. This choice governs the production method, meaning that the benefits of the chosen technique are visibly embodied in the final product. In other words, the selected production method ensures that the desired look and feel are expertly realized.



# CRAFTING A SUSTAINABLE FUTURE

Our story begins with the purity of nature. Our founder, Jan Bosman, crafted the renowned sisal carpet, blending coconut and hemp fibers. This masterpiece laid the foundation of Jabo, and our love for natural materials has remained steadfast throughout the years. Embracing sustainability is evident in our carpets. They proudly carry certifications from recognized sustainability authorities.



## WOOLMARK

The WOOLMARK label is a textile quality assurance and product certification program that ensures the fiber content and quality of woolen products.

Woolmark guarantees that the tested products are made of natural, renewable, and biodegradable wool.



## GUT-LABEL

The GUT label represents the standards set for environmentally friendly flooring.

This label is awarded to carpets and floor coverings produced with respect for the environment, the safety of individuals, and for comfort throughout the entire lifecycle of the product.

## PRESENCE



In essence, we use natural, materials or sustainable materials with an unwavering commitment. We not only honor the environment but also strive to craft carpets that inspire a sense of serenity and connect your space with nature. Our history is deeply rooted in the natural world, and our mission is to keep that connection alive.

## GREEN



Green is more than a colour; it's a way of life. We're committed to environmentally friendly and sustainable materials. From concept to creation, our focus on green principles also contributes to a greener tomorrow. Every detail reflects our dedication to responsible living, making your choice not just stylish but sustainable.

## TRANSPARENT



We believe in openness and honesty in our production processes, from raw materials to the final product. This approach enables us to manage production processes with a reduced environmental impact. We want you to know where our products come from and how they are made, so you can confidently choose sustainable carpets that is good for the space and our planet.







## NORDIC LIGHT HOTEL

The Nordic Light Hotel in Stockholm, designed by Dahl Agenturen, reflects Scandinavian simplicity and modern design. Natural materials, clean lines, and subtle lighting create a warm, inviting atmosphere where guests immediately feel at home.



USED PRODUCTS | WOOL 1425 wall-to-wall  
 PHOTOGRAPHY | Marta Mytych  
 PROJECT BY | Dahl Agenturer  
 ARCHITECT | Saunders Architecture



## THE JABO STUDIO

*At Jabo, we offer a collection that seamlessly transforms into bespoke rugs, tailored to your natural environment and brought to life through your imagination.*

Be creative, and let your thoughts run wild. With our cutting machine, your ideas become distinctive rugs. It's all part of the Jabo feeling, where expressiveness and craftsmanship converge to craft an atmosphere where people can withdraw for a while to collect themselves and experience peace of mind.

Every dimension, shape, and colour combination you envision can come to life in the form of a Jabo rug.

The combination of natural colours, structures and textures, exudes simplicity, tranquility, warmth and harmony, while emphasizing the practical and functional aspects. In fact, you could say the atmosphere that is created in the home with this Jabo rug, emulates that of nature.





# YOUR RUG, YOUR DESIGN

Immerse yourself in the world of Jabo, where your rug becomes a canvas for your imagination. We encourage you to shape your perfect design, selecting from a palette of natural materials and colours of our wide collection.

## SHAPE



Feel empowered to mold your artistic expression into a matching shape. Craft a rug as unique as you are and let it tell your story. With Jabo, the shapes know no bounds, and your personal style takes center stage to craft an atmosphere that envelops you in a sense of serenity.

## MEASURE



Endless customization in size when it comes to crafting your rug. Whether it's a snug shape for your reading nook, a long runner to grace your hallway, or a grand centerpiece for your living room, our flexibility makes it possible. Every unique spaces deserve unique sizes.

## QUALITY



Because of the close bond we share with the nature, we use only natural materials, such as sisal, seagrass and wool for the manufactured rugs. The Jabo collection offers the freedom to blend various colours and materials for your rug, enabling you to compile the appropriate ambiance.

## FINISHING



Craftsmanship meets your vision. The diverse selection of edge finishes not only adds a touch of sophistication but also offers endless combinations, enhancing the allure of your designed rug. Every design is handcrafted in the Jabo studio.

# SHAPING SIGNATURES

*We invite you to take on the role of designer.*

Our entire collection is your canvas, and the possibilities are boundless. Embrace the freedom to choose the size and shape that fits your space and style.

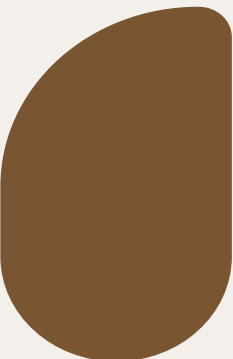
For those moments when inspiration sparks but you're unsure where to begin, let us illuminate you with some design forms.



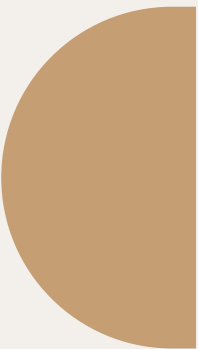
BEAN



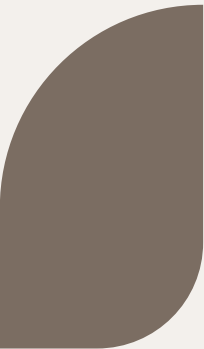
PEBBLE



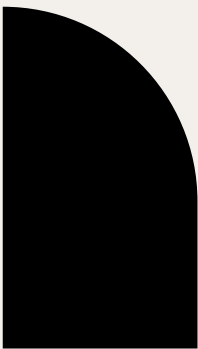
ALMOND



SUNRISE



PETAL



SLIDE





FINISHING  
COTTON BLIND

## THE ART OF RUG FINISHING

1

### COTTON

A cottonlook finish bestows a natural touch to the edge of a rug, complemented by its recyclability and long-lasting durability. It's available in a wide array of colors, perfectly matching the rug itself. Also available in 5 cm width.

2

### OUTDOOR

The outdoor border finish can be used for our Jabo rugs which are suitable for indoor and outdoor use. The border matches any Jabo quality, is resistant to all kinds of weather and suitable for project use.



## BLIND FINISHING

The edges of the rug are enveloped with a border in the exact same shade, creating an almost invisible and seamless finish.





## WHERE ELEGANCE GETS ELEVATED

Carpeting instantly transforms any space into a haven of comfort and coziness. On the stairs, it creates a welcoming ambiance with every step. It softens noise, enhances tranquility, and provides a warm, gentle touch underfoot. A seamless balance of style and function.

### RUNNERS

*A stair runner is originally a traditional product that is often given a modern twist these days.*

When you opt for a stair runner, you're essentially covering only the walking path of the staircase, leaving the original material of the stair treads exposed, creating a beautiful contrast.

It is an expertly made and installed product that not only improves the functionality and safety of the stairs, but is also a visually appealing addition to the interior design. In this context, elements like the interplay of colours, the choice of materials, and the final finish on the stair treads take on a pivotal role.



### STAIR COVERING

*Full carpeting for stairs, a choice that seamlessly unifies your spaces.*

Beyond the cozy ambiance it imparts, it's a practical choice too. The rich texture serves as a natural sound buffer, reducing noise and creating a serene acoustic environment. Whether it's a quiet morning or a bustling evening, your stairs become a statement of style and comfort, enhancing the harmony.









## OFFICE MEDIA GROUP

Office project by 88 Projects in collaboration with Studio Sluizer. The studio created a space that merges the boundaries between nature and work, creating an atmosphere that is both invigorating and calming.



USED PRODUCTS | SISAL 9421 rug  
PHOTOGRAPHY | Jurrit van der Waal  
PROJECT BY | 88 Projects & Studio Sluizer

# THE COLLECTION

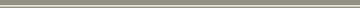
At the core of Jabo lies a deep connection with nature, where our story began. We continue to draw inspiration from the beauty of natural materials, such as sisal, seagrass, and wool.



WOOL



BLEND



SISAL



SOFT



OUTDOOR





**WOOL | 1425**

Colours 7  
Pilematerial 100% wool  
Thickness 8,6 mm  
Production Woven  
Width 400 cm



**WOOL | 1426**

Colours 7  
Pilematerial 100% wool  
Thickness 9,0 mm  
Production Woven  
Width 400 cm



**WOOL | 1427**

Colours 7  
Pilematerial 100% wool  
Thickness 9,8 mm  
Production Woven  
Width 400 cm



**WOOL | 1428**

Colours 6  
Pilematerial 100% wool  
Thickness 4,8 mm  
Production Woven  
Width 400 cm



**WOOL | 1429**

Colours 6  
Pilematerial 100% wool  
Thickness 5,8 mm  
Production Woven  
Width 400 cm



**WOOL | 1430**

Colours 6  
Pilematerial 100% wool  
Thickness 5,7 mm  
Production Woven  
Width 400 cm



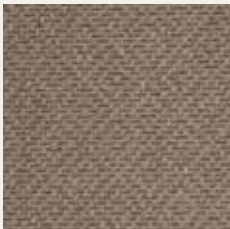
**WOOL | 1431**

Colours 9  
Pilematerial 100% wool  
Thickness 5,3 mm  
Production Woven  
Width 400 cm



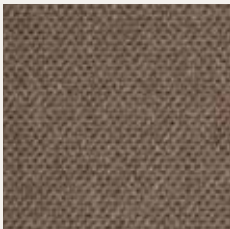
**WOOL | 1432**

Colours 9  
Pilematerial 100% wool  
Thickness 5,5 mm  
Production Woven  
Width 400 cm



**WOOL | 1433**

Colours 9  
Pilematerial 100% wool  
Thickness 6,5 mm  
Production Woven  
Width 400 cm



**WOOL | 1434**

Colours 9  
Pilematerial 100% wool  
Thickness 6,4 mm  
Production Woven  
Width 400 cm



**WOOL | 1435**

Colours 5  
Pilematerial 100% undyed wool  
Thickness 3,5 mm  
Production Woven  
Width 400/500 cm



**WOOL | 1436**

Colours 5  
Pilematerial 100% undyed wool  
Thickness 3,5 mm  
Production Woven  
Width 400/500 cm



**WOOL | 1437**

Colours 5  
Pilematerial 100% undyed wool  
Thickness 4,0 mm  
Production Woven  
Width 400/500 cm



**WOOL | 1621**

Colours 12  
Pilematerial 100% wool  
Thickness 9,5 mm  
Production Tufted  
Width 400/500 cm



**WOOL | 1623**

Colours 6  
Pilematerial 100% wool  
Thickness 11 mm  
Production Tufted  
Width 400 cm



**WOOL | 1625**

Colours 10  
Pilematerial 100% wool  
Thickness 7,5 mm  
Production Tufted  
Width 400/500 cm



**WOOL | 1627**

Colours 6  
Pilematerial 100% wool  
Thickness 6,4 mm  
Production Tufted  
Width 400/500 cm



**WOOL | 1629**

Colours 6  
Pilematerial 100% wool  
Thickness 7,0 mm  
Production Tufted  
Width 400/500 cm



**WOOL | 1630**

Colours 6  
Pilematerial 100% wool  
Thickness 9,1 mm  
Production Tufted  
Width 400/500 cm



**WOOL | 1631**

Colours 6  
Pilematerial 100% wool  
Thickness 7,8 mm  
Production Tufted  
Width 400/500 cm



**WOOL | 1632**

Colours 6  
Pilematerial 100% wool  
Thickness 8,3 mm  
Production Tufted  
Width 400/500 cm



**WOOL | 1633**

Colours 6  
Pilematerial 100% wool  
Thickness 5,0 mm  
Production Tufted  
Width 400/500 cm



**WOOL | 1635**

Colours 6  
Pilematerial 100% wool  
Thickness 6,4 mm  
Production Tufted  
Width 400/500 cm



**WOOL | 1636**

Colours 8  
Pilematerial 80% wool / 20% PP  
Thickness 9,1 mm  
Production Tufted  
Width 400/500 cm



**WOOL | 1637**

Colours 8  
Pilematerial 80% wool/10% PP  
10% PES  
Thickness 8,5 mm  
Production Woven  
Width 400/500 cm



**WOOL | 1638**

Colours 4  
Pilematerial 100% undyed wool  
Thickness 8,5 mm  
Production Tufted  
Width 400/500 cm



**WOOL | 1639**

Colours 4  
Pilematerial 100% undyed wool  
Thickness 9,5 mm  
Production Tufted  
Width 400/500 cm



**WOOL | 1640**

Colours 5  
Pilematerial 100% wool  
Thickness 19,0 mm  
Production Tufted  
Width 400 cm





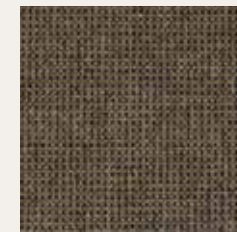
#### BLEND | 2422

Colours 6  
Pilematerial 100% PP  
Thickness 5,5 mm  
Production Woven  
Width 400 cm



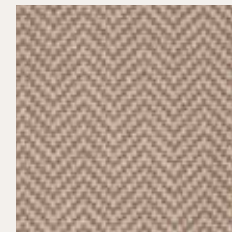
#### BLEND | 2432

Colours 6  
Pilematerial 90% PP/10% wool  
Thickness 5,5 mm  
Production Woven  
Width 400 cm



#### BLEND | 2423

Colours 6  
Pilematerial 100% PP  
Thickness 5,5 mm  
Production Woven  
Width 400 cm



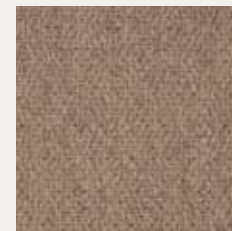
#### BLEND | 2433

Colours 6  
Pilematerial 90% PP/10% wool  
Thickness 6,0 mm  
Production Woven  
Width 400/500 cm



#### BLEND | 2424

Colours 6  
Pilematerial 100% PP  
Thickness 5,5 mm  
Production Woven  
Width 400 cm



#### BLEND | 2434

Colours 6  
Pilematerial 90% PP/10% wool  
Thickness 6,0 mm  
Production Woven  
Width 400 cm



#### BLEND | 2431

Colours 6  
Pilematerial 90% PP/10% wool  
Thickness 5,5 mm  
Production Woven  
Width 400 cm



#### BLEND | 2435

Colours 8  
Pilematerial 90% PP/10% wool  
Thickness 5,0 mm  
Production Woven  
Width 400/500 cm



**SISAL TILES | 9421**

Colours 4  
Pilematerial 100% sisal  
Thickness 7 mm  
Production Woven  
Dimension 50x50 cm



**SISAL | 9421**

Colours 13  
Pilematerial 100% sisal  
Thickness 5,2 mm  
Production Woven  
Width 400/500cm



**SISAL | 9422**

Colours 4  
Pilematerial 100% sisal  
Thickness 6,3 mm  
Production Woven  
Width 400 cm



**SISAL | 9423**

Colours 4  
Pilematerial 100% sisal  
Thickness 6,2 mm  
Production Woven  
Width 400 cm



**SISAL | 9424**

Colours 4  
Pilematerial 100% sisal  
Thickness 4,1 mm  
Production Woven  
Width 400 cm



**SISAL | 9425**

Colours 4  
Pilematerial 100% sisal  
Thickness 7,0 mm  
Production Woven  
Width 400 cm



**SISAL | 9427**

Colours 5  
Pilematerial 100% sisal  
Thickness 5,8 mm  
Production Woven  
Width 400/500 cm



**SISAL | 9428**

Colours 5  
Pilematerial 100% sisal  
Thickness 7,6 mm  
Production Woven  
Width 400/500 cm



**SISAL | 9429**

Colours 5  
Pilematerial 100% sisal  
Thickness 8,5 mm  
Production Woven  
Width 400/500 cm



**SISAL | 9430**

Colours 5  
Pilematerial 100% sisal  
Thickness 8,8 mm  
Production Woven  
Width 400/500 cm





**SISAL | 9426-1**

Colours	1
Pilematerial	100% seagrass
Thickness	6,0 mm
Production	Woven
Width	400 cm



**SISAL | 9426-2**

Colours	1
Pilematerial	100% seagrass
Thickness	5,4 mm
Production	Woven
Width	400 cm



**SISAL | 9426-3**

Colours	1
Pilematerial	100% seagrass
Thickness	5,4 mm
Production	Woven
Width	400 cm





#### SOFT | 2622

Colours 9  
Pilematerial 100% PA 6  
Thickness 10,2 mm  
Production Tufted  
Width 400/500 cm



#### SOFT | 2623

Colours 9  
Pilematerial 100% PA 6  
Thickness 14 mm  
Production Tufted  
Width 400/500 cm



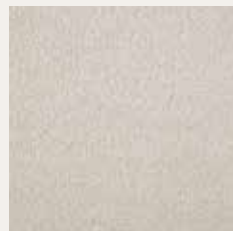
#### SOFT | 2624

Colours 9  
Pilematerial 100% PA 6  
Thickness 8,9 mm  
Production Tufted  
Width 400 cm



#### SOFT | 2625

Colours 7  
Pilematerial 100% PA 6.6  
Thickness 9,0 mm  
Production Tufted  
Width 400 cm



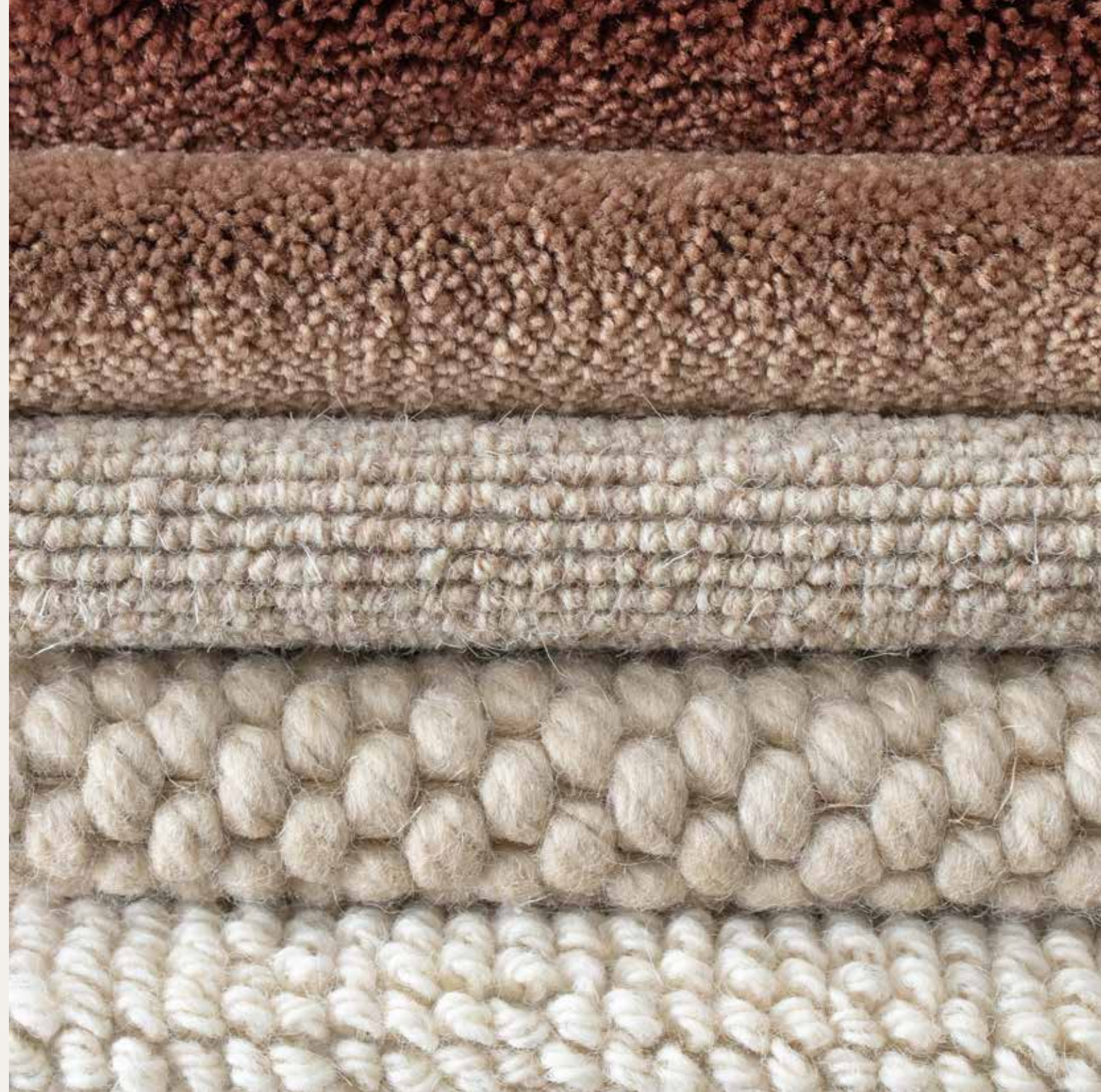
#### SOFT | 2627

Colours 9  
Pilematerial 100% PA 6.6  
Thickness 9,0 mm  
Production Tufted  
Width 400/500 cm



#### SOFT | 2628

Colours 9  
Pilematerial 100% PA 6  
Thickness 6,5 mm  
Production Tufted  
Width 400/500 cm







**OUTDOOR | 2440**

Colours 5  
Pilematerial 100% PP  
Thickness 3,6 mm  
Production Woven  
Width 400 cm



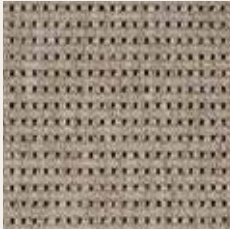
**OUTDOOR | 2441**

Colours 5  
Pilematerial 100% PP  
Thickness 3,4 mm  
Production Woven  
Width 400 cm



**OUTDOOR | 2445**

Colours 3  
Pilematerial 100% PP  
Thickness 5,0 mm  
Production Woven  
Width 400 cm



**OUTDOOR | 2446**

Colours 4  
Pilematerial 100% PP  
Thickness 5,0 mm  
Production Woven  
Width 400 cm



**OUTDOOR | 2447**

Colours 4  
Pilematerial 100% PP  
Thickness 5,0 mm  
Production Woven  
Width 400 cm



**OUTDOOR | 2448**

Colours 6  
Pilematerial 100% PP  
Thickness 5,0 mm  
Production Woven  
Width 400 cm





## COMBINE INDOOR WITH OUTDOORS

### OUTDOOR

The natural colours at the heart of this collection bring a sense of tranquillity and luxury. The warm earth tones perfectly complement any outdoor environment.

The rugs feel like they are made of sisal, hemp or sea grass. These are available in any shape and size up to four metres wide. Turn your project into a unique whole with our rugs that always match your wishes and design.



### MATCHING BORDERS

This border finish can be used for our Jabo rugs which are suitable for indoor and outdoor use. The border matches any Jabo quality, is resistant to all kinds of weather and suitable for project use.

## SWATCH YOUR WAY AND FIND YOUR *DEALER*

Explore a world of colours and textures with our free fabric samples. They're not just samples; they're your brushstrokes on the canvas of creativity, your passport to the world of design. Order your mood-enhancers now and let the swatching begin.

Our dealers await you with open doors and in-depth knowledge of Jabo products. Scan the QR-code to find your Jabo advisor.



# .JABO

**Address** Sasdijk 14, 8281 BM Genemuiden (NL) **Phone** +31 38 385 6444  
**E-mail** [info@jabo-carpets.nl](mailto:info@jabo-carpets.nl) **Site** [www.jabo-carpets.nl](http://www.jabo-carpets.nl)



.JA