

A photograph of an outdoor furniture set by JABO. The set includes two wicker armchairs with light-colored cushions, a small round side table with a green glass base, and a large white patio umbrella. The furniture is arranged on a circular brown rug next to a swimming pool. The background is filled with lush green foliage, including palm trees. The text "OUTDOOR COLLECTION" is overlaid in the center, and "JABO" is at the bottom.

OUTDOOR COLLECTION

JABO

Durable, stylish and easy-care. Discover our outdoor collection. Experience luxury and sophistication in your own outdoor space with this collection. Designed with attention to detail, executed in a unique natural look and made from sustainable recycled synthetic materials.



OUTDOOR

The natural colours in this collection bring a sense of tranquillity and luxury. The warm earth tones perfectly complement by any outdoor environment.

The carpets feel like they are made of sisal, hemp or seagrass but they are made of the best recycled polypropylene yarns that are very strong, UV resistant and project-appropriate. The entire collection is available in any shape and size up to 4 metres wide. Make your project unique with our rugs that always match with your needs and design.



MATCHING BORDERS

The Jabo edge finishes are chosen to match the collection exactly. The finishes are also UV-resistant and suitable for both outdoor and indoor use.

The border matches any Jabo quality, is resistant to all kinds of weather and suitable for project use.

CONTENT

HOW IT'S MADE	_____	7
THE COLLECTION	_____	11
THE JABO STUDIO	_____	23
SHAPES AND SIZES	_____	24
CARE FOR YOUR CARPET	_____	30
TECHNICAL INFORMATION	_____	31



HOW IT'S MADE

Woven carpet combines two defining features: lasting resilience and design.

In a simple process, heddles move up and down, the warp advances steadily, and a shuttle swiftly carries the weft from left to right, creating a fabric of remarkable stability and strength. Only the addition of a backing remains before the carpet is ready for upholstery.

The second hallmark is the wealth of textures and patterns achieved by fine-tuning variables such as heddle settings and spacing.
A true testament to Jabo's artistry.





THE COLLECTION

2440	_____	p. 13
2441	_____	p. 14
2445	_____	p. 17
2446	_____	p. 18
2447	_____	p. 19
2448	_____	p. 20

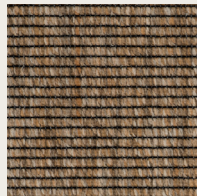


2440

Colours	5
Pilematerial	100% PP
Thickness	4,4 mm
Production	Woven



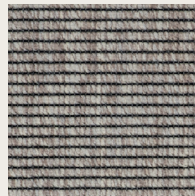
030



120



510



610



630



waterproof



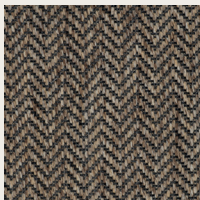
uv-proof

indoor and
outdoor usesuitable for
stairs

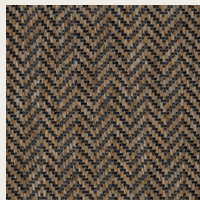
400 cm

2441

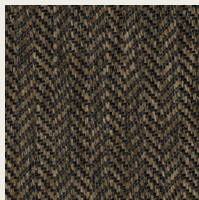
Colours	5
Pilematerial	100% PP
Thickness	3,4 mm
Production	Woven



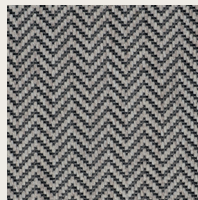
030



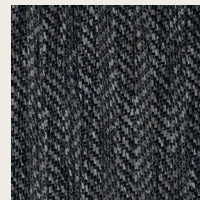
120



510



610



630



waterproof



uv-proof

indoor and
outdoor usesuitable for
stairs

400 cm



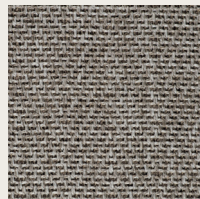


2445

Colours	3
Pilematerial	100% PP
Thickness	5,0 mm
Production	Woven



120



610



650



waterproof



uv-proof



indoor and
outdoor use



suitable for
stairs



400 cm

2446

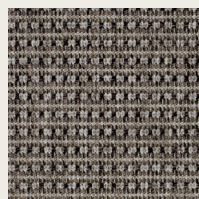
Colours	4
Pilematerial	100% PP
Thickness	5,0 mm
Production	Woven



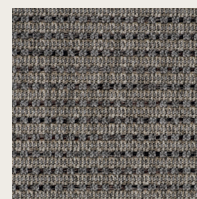
030



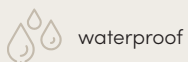
120



610



630



waterproof



uv-proof

indoor and
outdoor usesuitable for
stairs

400 cm

2447

Colours	4
Pilematerial	100% PP
Thickness	5,0 mm
Production	Woven



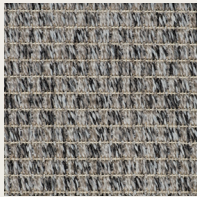
030



120



610



630



waterproof



uv-proof



indoor and
outdoor use



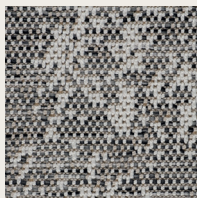
suitable for
stairs



400 cm

2448

Colours	4
Pilematerial	100% PP
Thickness	5,0 mm
Production	Woven



030



120



610



630



waterproof



uv-proof

indoor and
outdoor usesuitable for
stairs

400 cm





THE JABO STUDIO

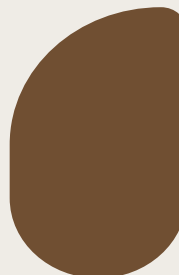
Discover our endless options for a custom designed rug.
Choose your favorite rug, size and shape to fit your space and style.
Find inspiration below to get started.



BEAN



PEBBLE



ALMOND



SUNRISE



PETAL



SLIDE

STANDARD SHAPES AND SIZES

The sizes shown are standard sizes.
Any shape or size is possible.



BEAN

1 2,00 x 3,09 m
 2 3,00 x 4,64 m
 3 4,00 x 6,19 m



ALMOND

1 2,00 x 3,06 m
 2 3,00 x 4,60 m
 3 4,00 x 6,13 m



PEBBLE

1 2,00 x 2,84 m
 2 3,00 x 4,27 m
 3 4,00 x 5,68 m



PETAL

1 2,00 x 3,38 m
 2 3,00 x 5,07 m
 3 4,00 x 6,76 m



SUNRISE

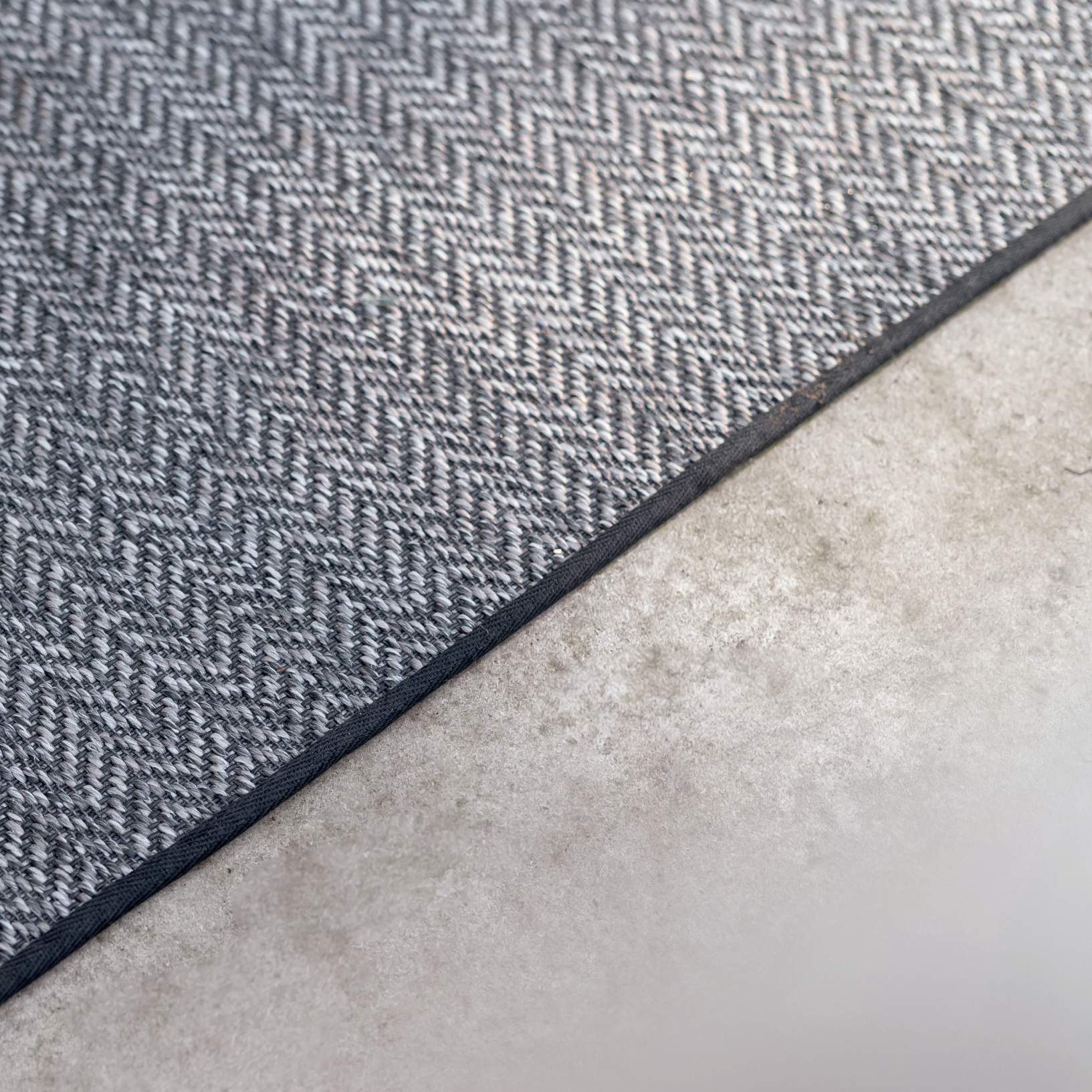
1 2,00 x 3,51 m
 2 3,00 x 5,26 m
 3 4,00 x 7,02 m



SLIDE

1 2,00 x 3,51 m
 2 3,00 x 5,26 m
 3 4,00 x 7,02 m









CARE FOR YOU CARPET

It is important to maintain your rug properly. Below are some tips on how to maintain your rug.

- We recommend vacuuming the rug once or twice a week. This way, there will be no accumulated waste.
- Wet stains should be removed immediately. Use kitchen paper or a cloth.
- If the rug is heavily soiled, we recommend having it cleaned by a professional cleaning company.
- When storing the rug, we recommend cleaning it first and letting it wear up. Then it can be rolled up and stored. We do not recommend folding the rug.
- It is possible to clean the rug with bleach. Gently rub a water-diluted bleach solution on the stain and let it sit for a few minutes. Do not let this wear on. Avoid water soaking into the rug.



JAMES.EU

James is our trusted partner in the realm of cleaning products, ensuring expert advice and support whenever you need it.

TECHNICAL INFORMATION

Below you can find the PIT-symbols that apply to all products in the outdoor collection.



1. Suitable for heavy residential use



2. Suitable for heavy project use



3 Suitable for floor heating



4. Suitable for stairs



5. Suitable for castor chairs



6. Fire class Dfl-s1



7. Slip resistant



8. Light fastness 7



9. Antistatic

.JA

Sasdijk 14
8281 BM Genemuiden
The Netherlands

info@jabo-carpets.nl
+31 (0)38 385 64 44
www.jabo-carpets.nl